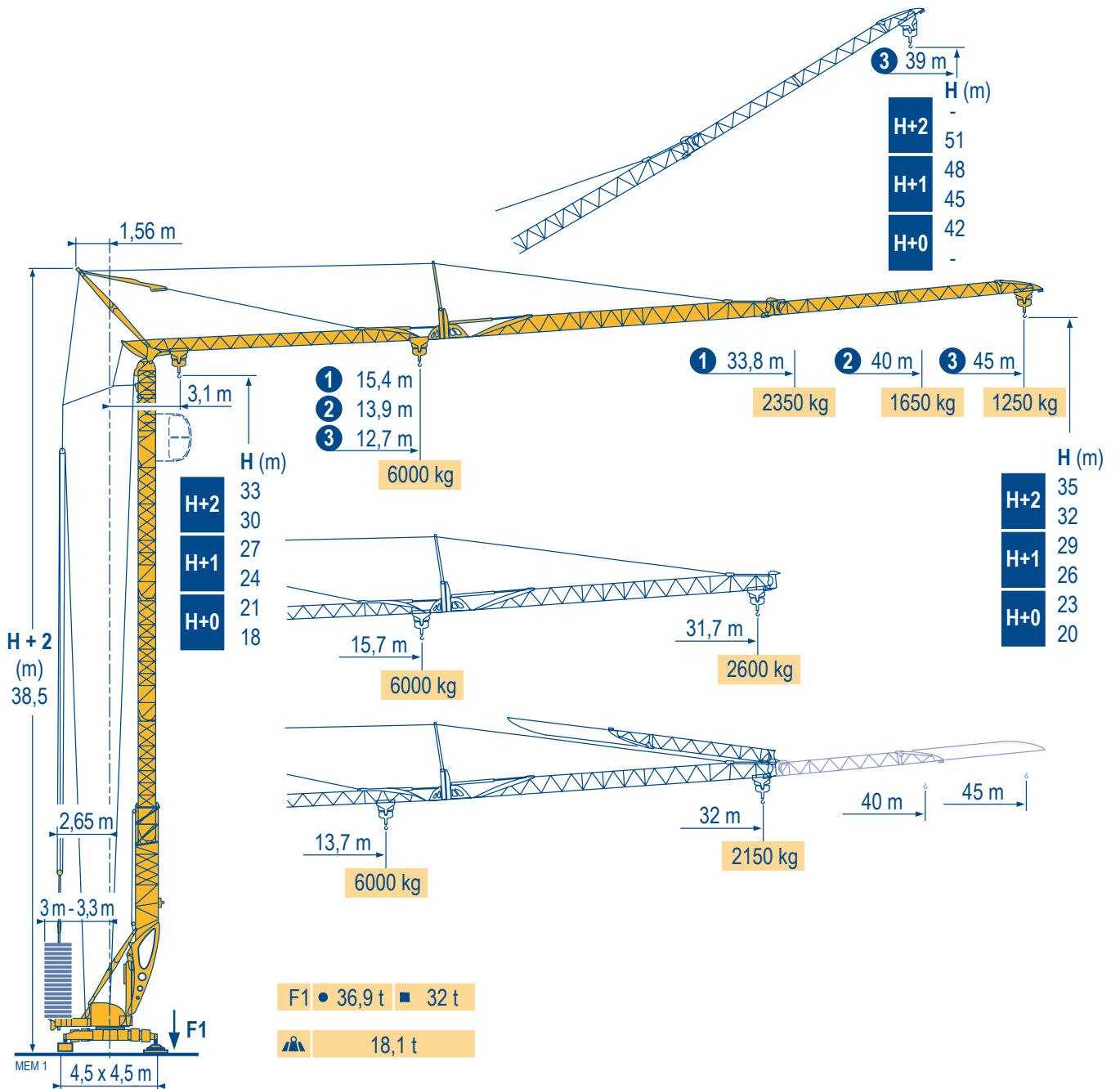
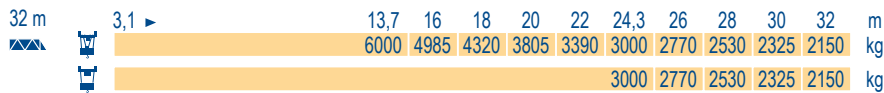
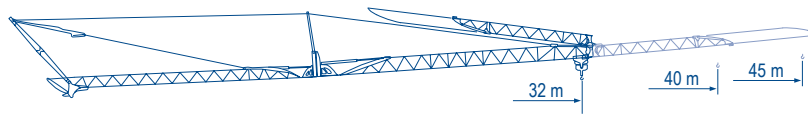
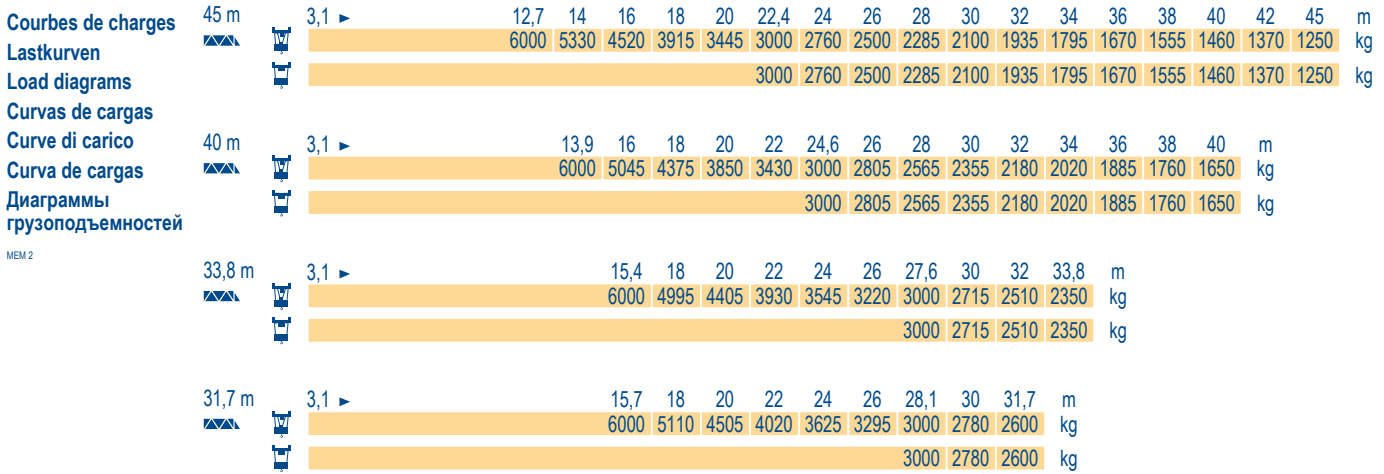


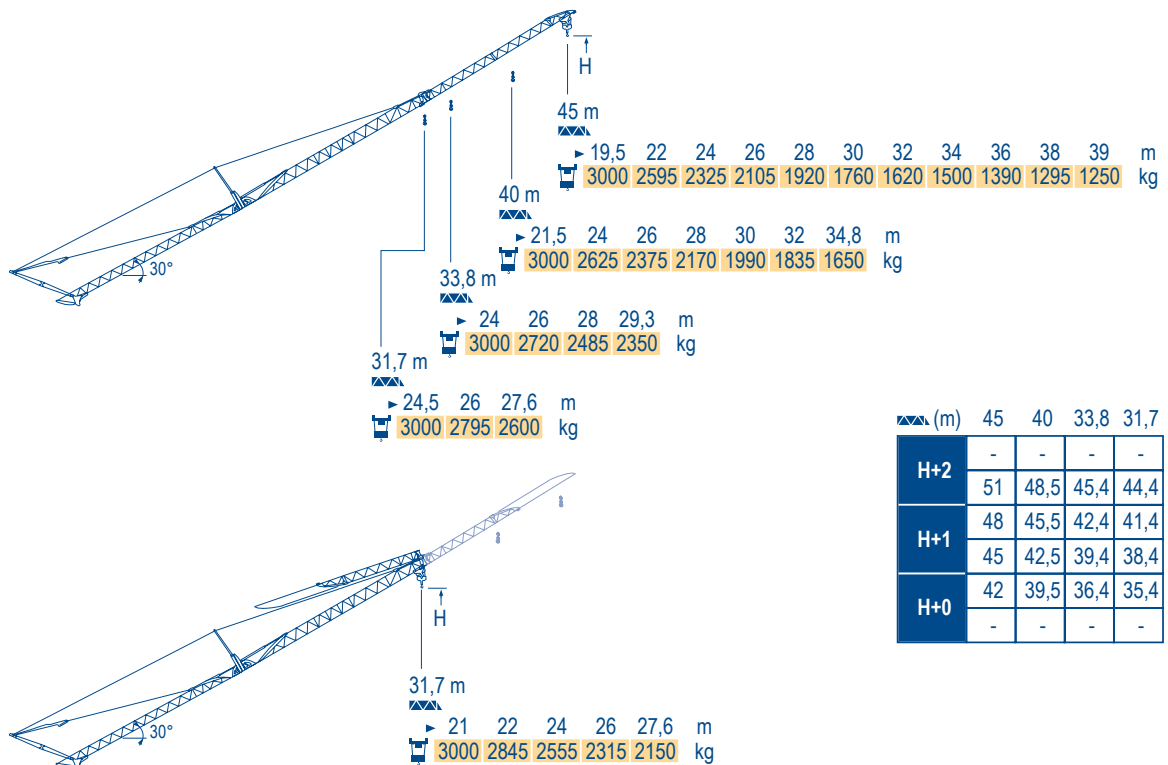
## Igo T 85





**Flèche relevée**  
**Ausleger in Steilstellung**  
**Luffing jib**  
**Flecha izada**  
**Braccio impennato**  
**Lança inclinada**  
**Маховая стрела**

MEM 2



(m)	45	40	33,8	31,7
H+2	-	-	-	-
H+1	51	48,5	45,4	44,4
H+0	48	45,5	42,4	41,4
	45	42,5	39,4	38,4
	42	39,5	36,4	35,4
	-	-	-	-

## Igo T 85

**POTAIN**

**FR**

Réactions en service  
 Réactions hors service



A vide sans lest (ni train de transport) avec flèche et hauteur maximum.

**DE**

Reaktionskräfte in Betrieb  
 Reaktionskräfte außer Betrieb

Ohne Last, Ballast (und Transportachse), mit Maximalausleger und Maximalhöhe.

**EN**

Reactions in service  
 Reactions out of service

Without load, ballast (or transport axes), with maximum jib and maximum height.

**ES**

Reacciones en servicio  
 Reacciones fuera de servicio

Sin carga, sin lastre, (ni tren de transporte), flecha y altura máxima.

**IT**

Reazioni in servizio  
 Reazioni fuori servizio

A vuoto, senza zavorra (ne assali di trasporto) con braccio massimo e altezza massima.

**PT**

Reacções em serviço  
 Reacções fora de serviço

Sem carga (nem trem de transporte)- sem lastro com lança e altura máximas.


**RU**

Реакции при работе  
 Реакции в покое

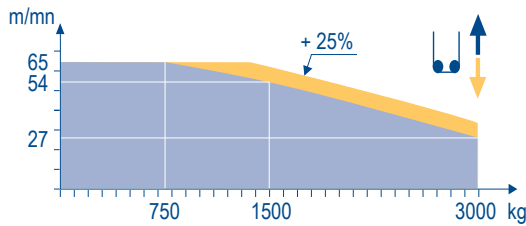
Вес без груза, балласта (или транспортных осей), с максимальной длиной стрелы и максимальной высотой.

Mécanismes  
Antriebe  
Mechanisms  
Mecanismos  
Meccanismi  
Mecanismos  
Механизмы

MEM 2

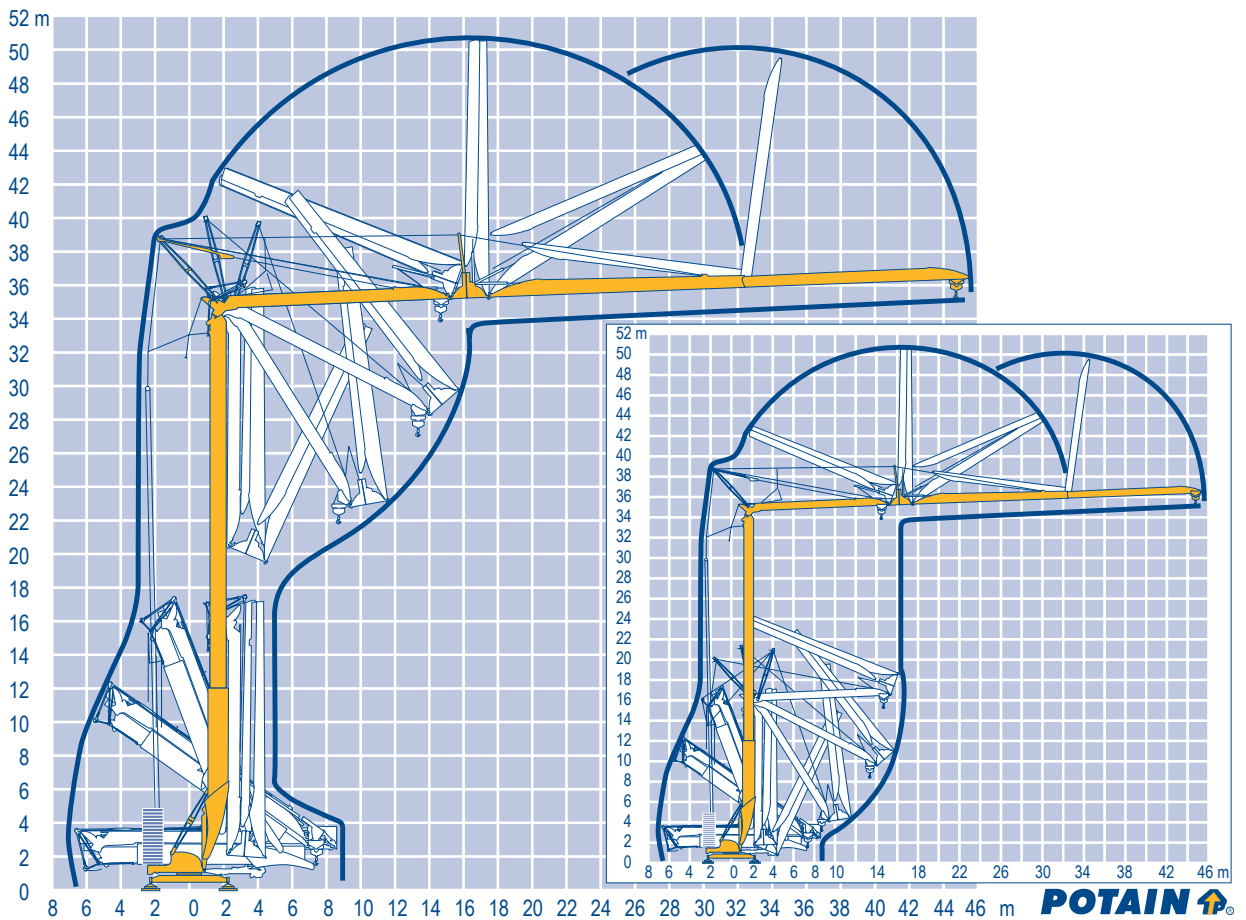
			II					III					ch - PS hp	kW
▲ ▼	20 LVF 15 Optima	m/min kg	3,2	16	27	54	65	1,6	8	13,5	27	32,5	20	15
◀ ▶	5 DVF 5	m/min	15 - 30 - 55 (0 2000 kg) -					15 - 30 - 40 (2000 6000 kg)					5,5	4
⦿	RVF 51 Optima +	tr/min U/min - rpm	0					0,8					5,5	4
◀ ● ▶	TVF 324	m/min	25										2 x 4	2 x 3
CEI 38  IEC 38			kVA											
400 V (+6% -10%) 50 Hz			20 LVF 15 : 31 kVA											
480 V (+6% -10%) 60 Hz			20 LVF 15 : 31 kVA											

20 LVF 15 Optima



Montage  
Montage  
Erection  
Montaje  
Montaggio  
Montagem  
Монтаж

MEM 2



**POTAIN** 

FR



Levage  
Distribution  
Orientation  
Translation  
Nous consulter

DE

Heben  
Katzfahren  
Schwenken  
Kranfahren  
Auf Anfrage

EN

Hoisting  
Trolleying  
Slewing  
Travelling  
Consult us

ES

Elevación  
Distribución  
Orientación  
Traslación  
Consultamos

IT

Sollevamento  
Distribuzione  
Rotazione  
Traslazione  
Consultateci

PT

Elevação  
Distribuição  
Rotação  
Translação  
Consultar-nos

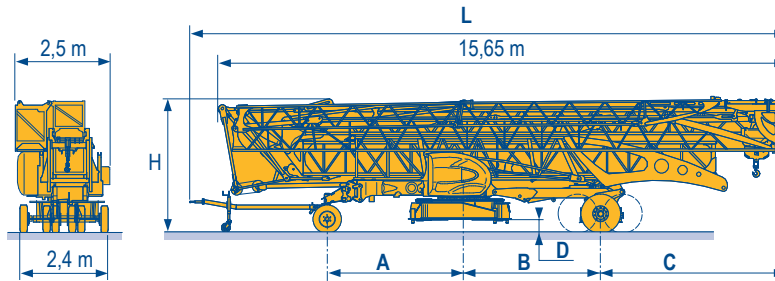
RU

Подъём  
Перемещение каретки  
Поворот  
Перемещение крана  
Проконсультируйтесь у нас

Transport  
Transport  
Transport  
Transporte  
Trasporto  
Transporte  
Транспортировка

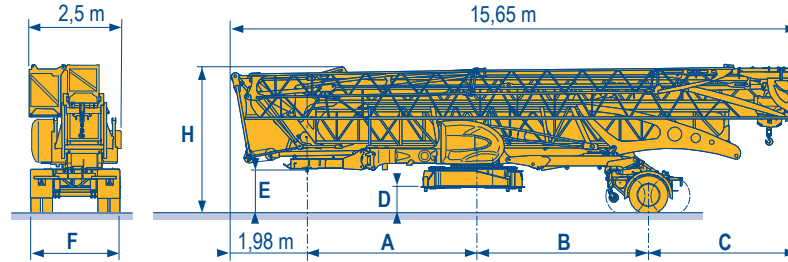
MEM 2

- DJ80/S120 ○
- DJ100/S120 ○
- DJ105/S125
- DJ126M/S125
- DJ126M/S215M



	L (m)	A (m)	B (m)	C (m)	D (m)	H (m)
DJ80/S120	16,65	3,78	3,77	5,2	0,3	3,7
DJ100/S120	16,65	3,78	3,77	5,2	0,3	3,7
DJ105/S125	16,65	3,78	3,77	5,2	0,3	3,7
DJ126M/S125	16,77	3,79	3,77	5,2	0,3	3,7
DJ126M/S215M	16,65	4,58	3,21	5,77	0,6	4

- SL121/J135
- SL121/S215M
- SL122/J215M



	A (m)	B (m)	C (m)	D (m)	E (m)	H (m)	F (m)
SL121/J135	4,69	4,2	4,78	0,7	1,3	4,1	2,45
SL121/S215M	4,69	3,21	5,77	0,6	1,2	4	2,4
SL122/J215M	4,69	3,21	5,77	0,6	1,2	4	2,45

- FR  
○ Chantier
- DE  
Baustelle
- EN  
Site
- ES  
Obra
- IT  
Cantiere
- PT  
Estaleiro
- RU  
По строительной площадке



Document commercial non contractuel. Pour toute information technique se référer à la notice correspondante.

Unverbindliches Vertriebsdokument. Für technische Informationen, siehe die entsprechenden Anweisungen.

This commercial document is not legally binding. For any technical information, please refer to the corresponding instructions.

Documento comercial no contractual. Para cualquier información técnica, ver la noticia correspondiente.

Documento commerciale non vincolante, per tutte le informazioni tecniche fare riferimento al catalogo istruzioni.

Documento comercial não contractual. Para qualquer informação técnica complementar consultar as respectivas instruções.

Этот коммерческий документ не является юридически обязательным. Для получения технической информации, см. соответствующие инструкции.



**Americas**

Tel : +1 888 479 7278  
Tel : +1 717 593 2000

**Europe – Middle East – Africa**

Tel : +33 (0) 4 72 81 50 00  
Tel : +44 (0) 191 522 2000

**Asia – Pacific**

Tel : +65 6264 1188  
Fax : +65 6862 4040

www.manitowoccranes.com

18, rue de Charbonnières - B.R.173  
69132 ECULLY Cedex - France

Tél. : +33 (0) 4 72 18 20 20  
Fax. : +33 (0) 4 72 18 20 00  
www.manitowoccranes.com

**Igo T 85**  
Réf. 2007 11 MEM 2

Copyright.Reproduction interdite © POTAIN 2007

Réalisation Sedoc